

Getting started with rsATCPlayer

rsATCPlayer can play .asx files (live audio streams) that **you** download from liveatc.net.

The Terms of Use at liveatc.net prevent me from distributing any of their .asx files. (I asked them ;-)

I have made rsATCPlayer so you can download files yourself then Import them in to rsATCPlayer.

Installation

Unzip and run the installer rsATCPlayerSetup.msi

rsATCPlayer is a standalone Windows executable and should not be installed into MSFS community folder.

Installation Notes:

rsATCPlayer stores imported .asx files along with its own .xml file in AppData.

(C:\Users\[your username]\AppData\Local\rsATCPlayer\LiveATC)

rsATCPlayer is a Windows application that has no direct ties to any simulator, so it can be used with MSFS 2020, MSFS 2024, or X-Plane.

However...

Starting with rsATCPlayer version 2.0, I have added a **Toolbar Panel** that will allow you to control rsATCPlayer from inside MSFS 2020 or MSFS 2024. This also means you can **control rsATCPlayer from in VR!** 😊

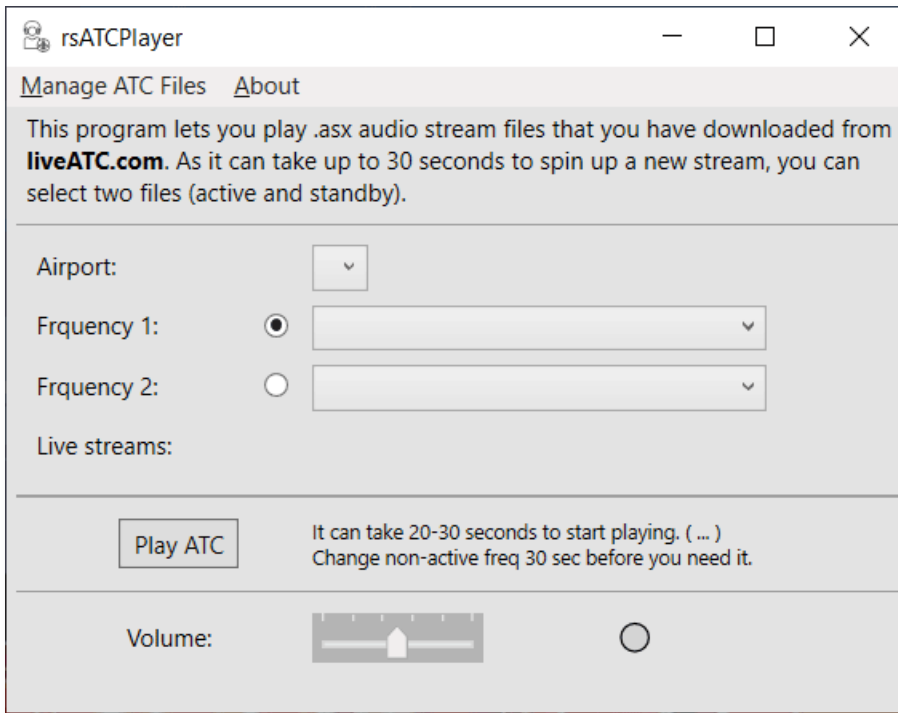
To use the in-game panel, you will need to do the following:

- In the install directory (C:\Program Files\rsATCPlayer) look for the file ***ownnavigation-rsatcplayer.zip***
- Unzip this into your MSFS 2020 or 2024 Community Folder.

The rsATCPlayer functionality is also in rsFirstOfficer.

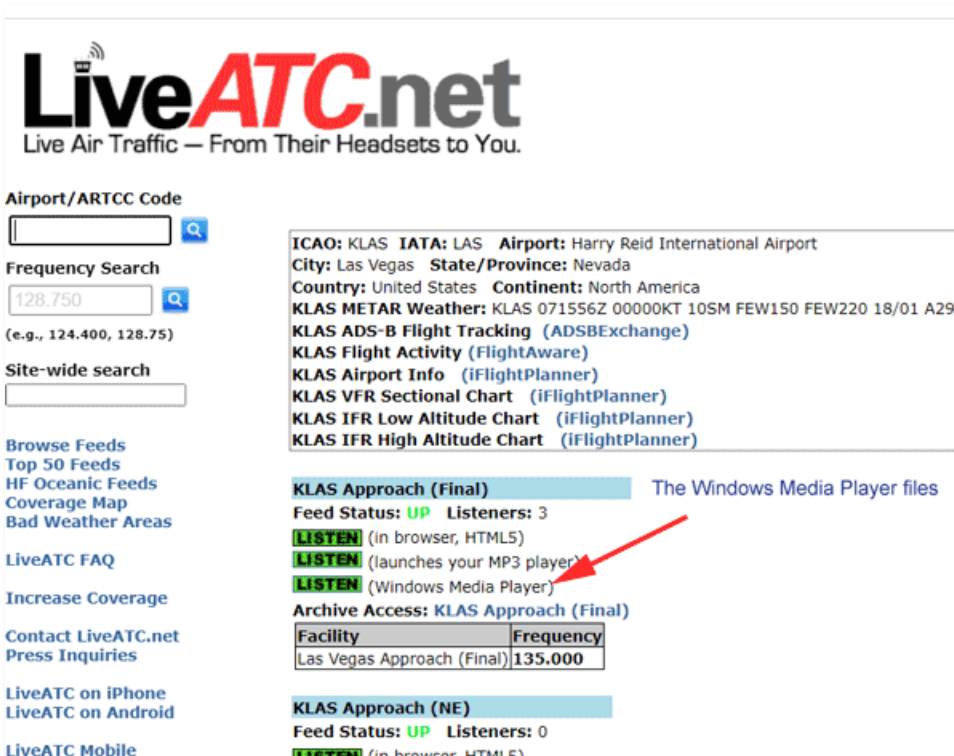
Operation

When you open rsATCPlayer for the first time it will appear pretty empty, like this...

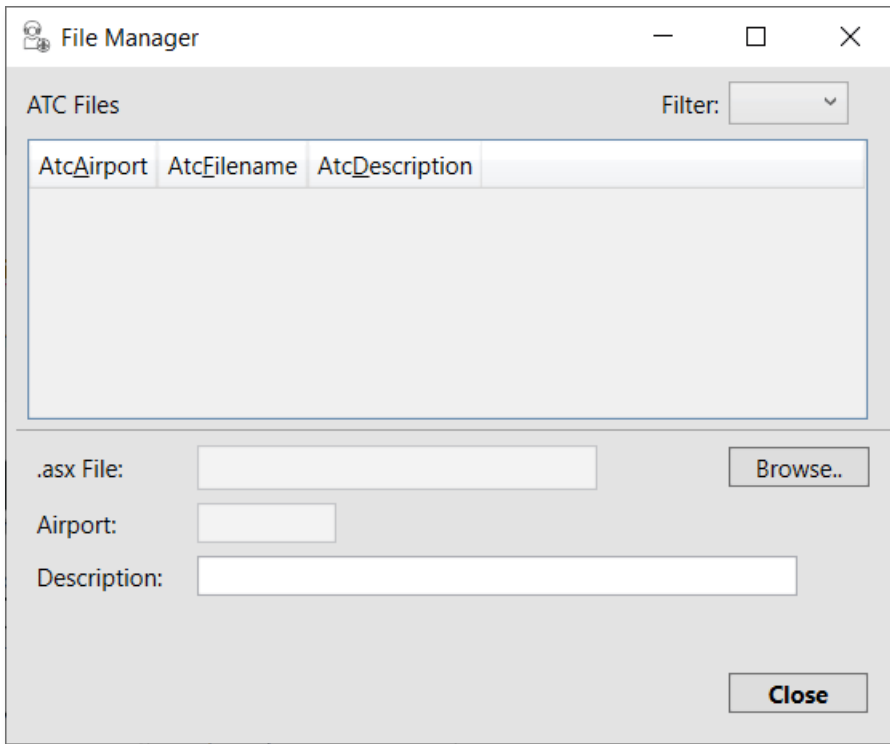


Let's add a LiveATC asx file.

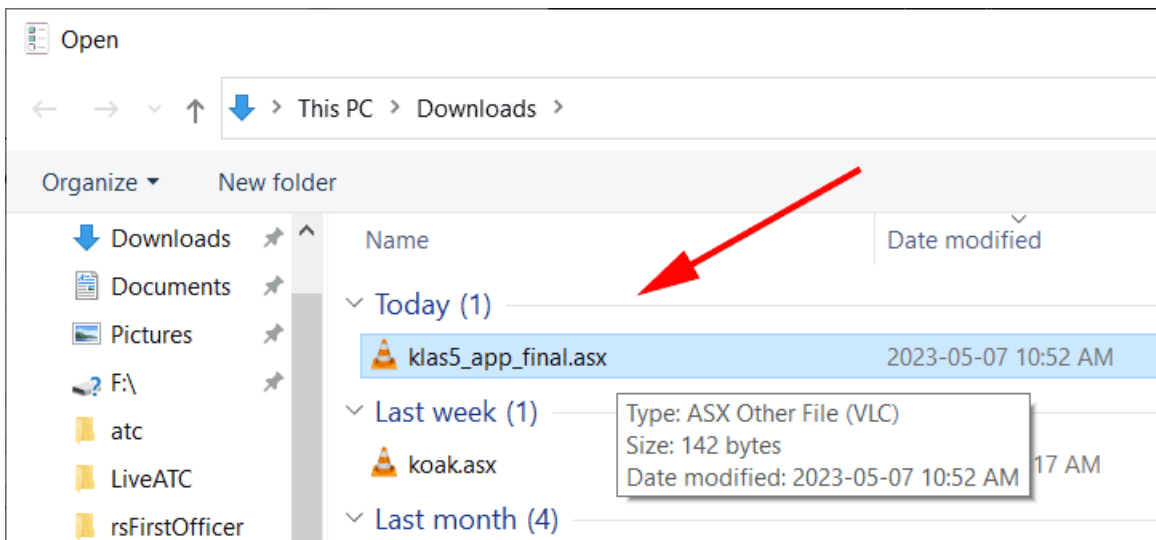
Download one from liveatc.net..



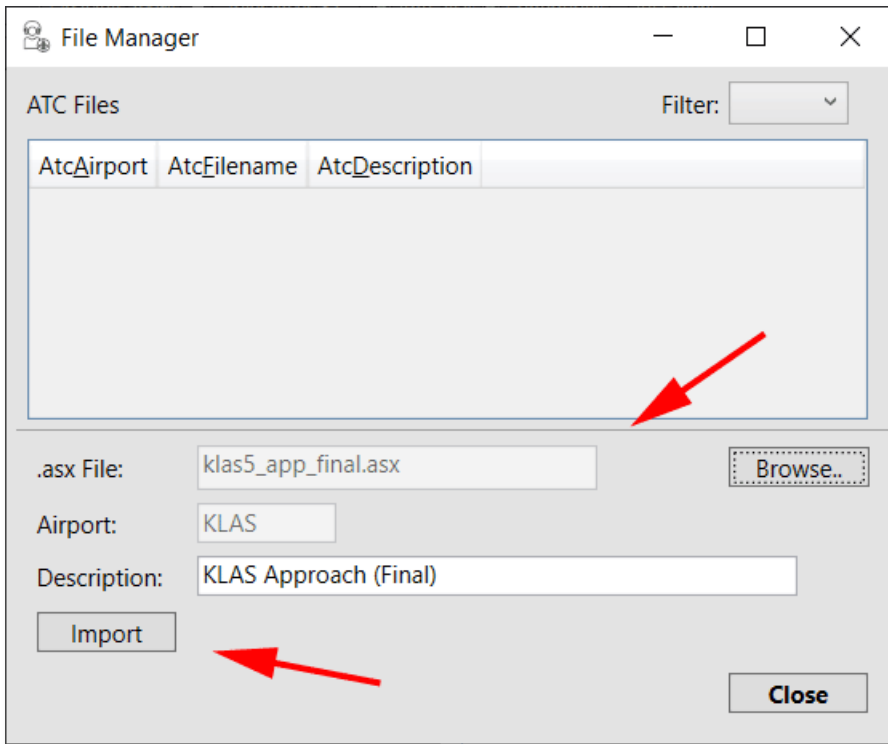
Now in rsATCPlayer, select the Manage ATC Files menu to open the File Manager.



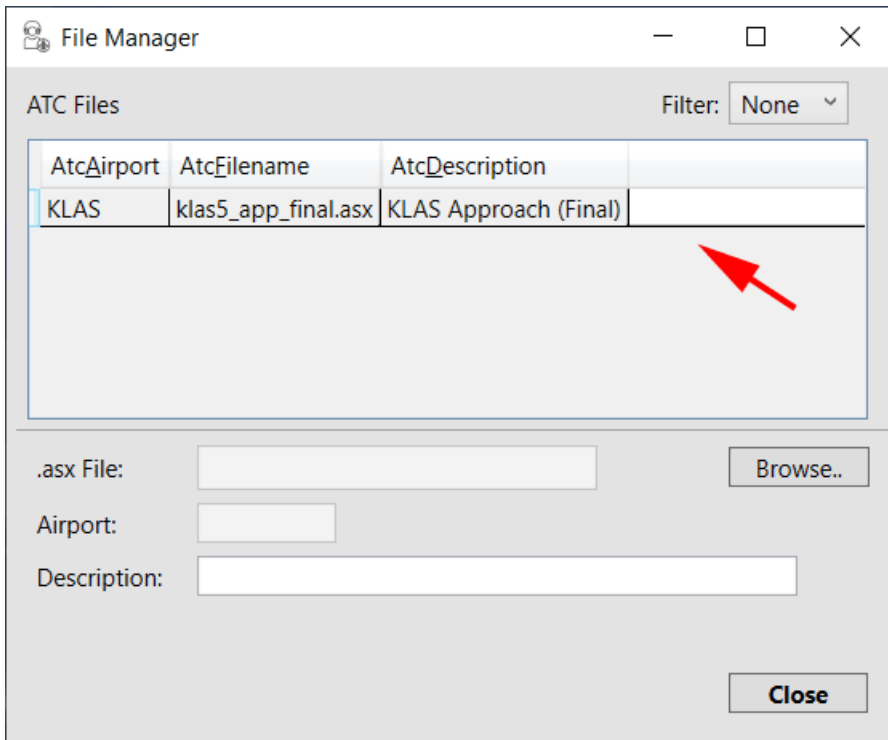
Use 'Browse' to locate and open the file you downloaded above.



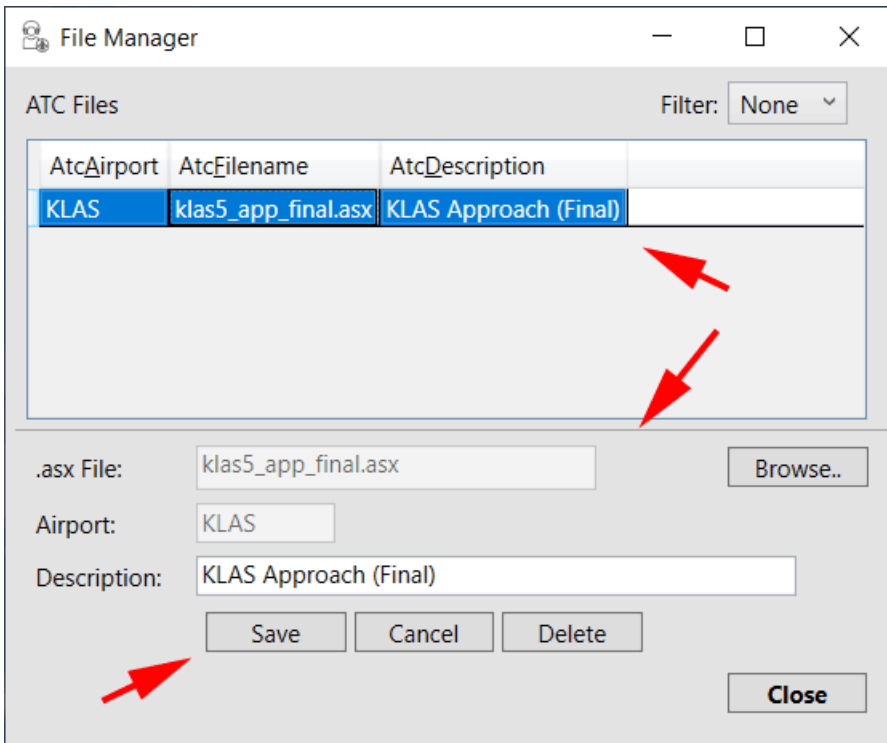
The file details fill in and you can press the 'Import' button to load the file into rsATCPlayer.



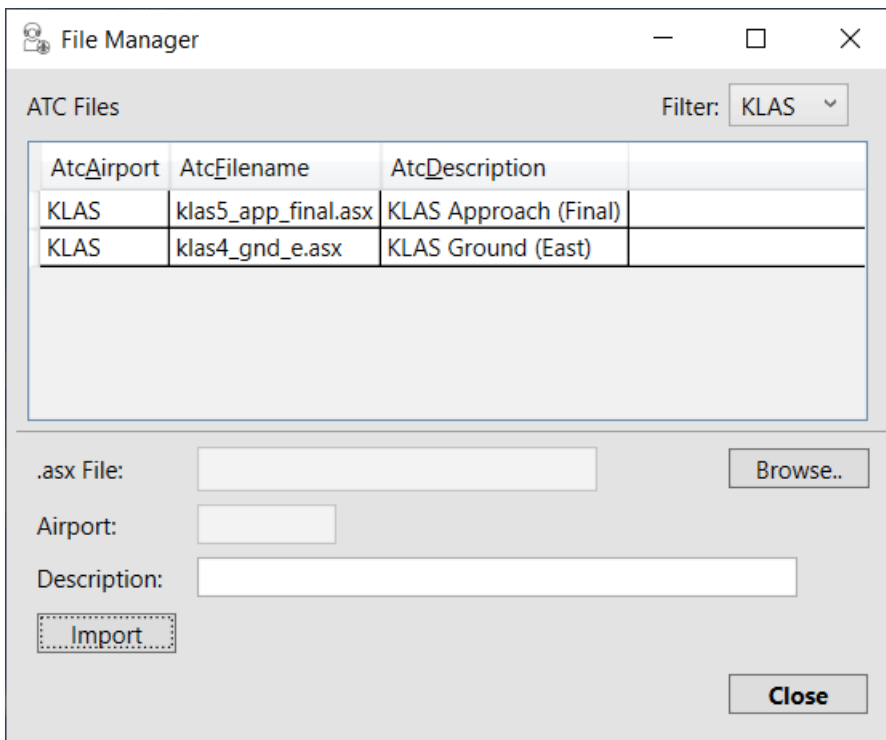
Your first asx file is loaded.



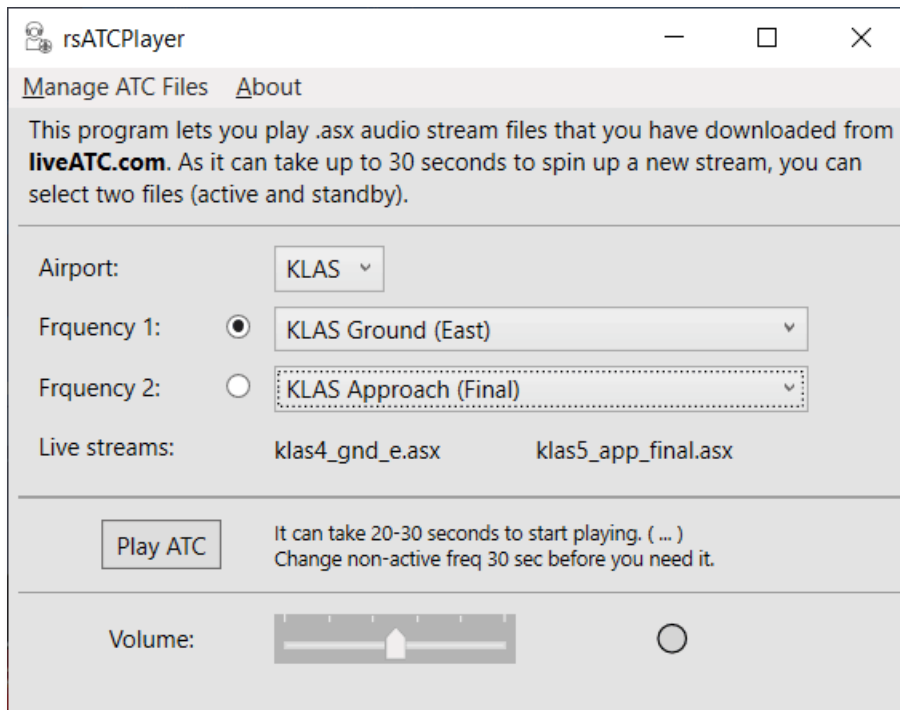
To edit the description or remove the file, you select it from the list.



Add another using the same procedure.



Click on 'Close' to return to the main rsATCPlayer screen.



The radio button beside the Frequency 1 and 2 labels indicate which frequency is 'live' or selected to play.

Due to the long time (20-30sec) it takes to start up an audio stream, this screen lets you play one while changing to your next one.

When you press 'Play' you will see "... " to the right of each frequency dropdown list box that indicates the system is buffering the audio and playing will start when it goes out.

You might want to start by testing an ATIS as it is always talking, other frequencies can be silent a lot and you may not think the system is working.

Changing Airport, or changing the currently playing frequency, will stop the player and you will need to hit play again. Changing the non-active frequency will not stop the player, so you can get seamless transition if you plan ahead.

That's about it.

Enjoy

December 2024